

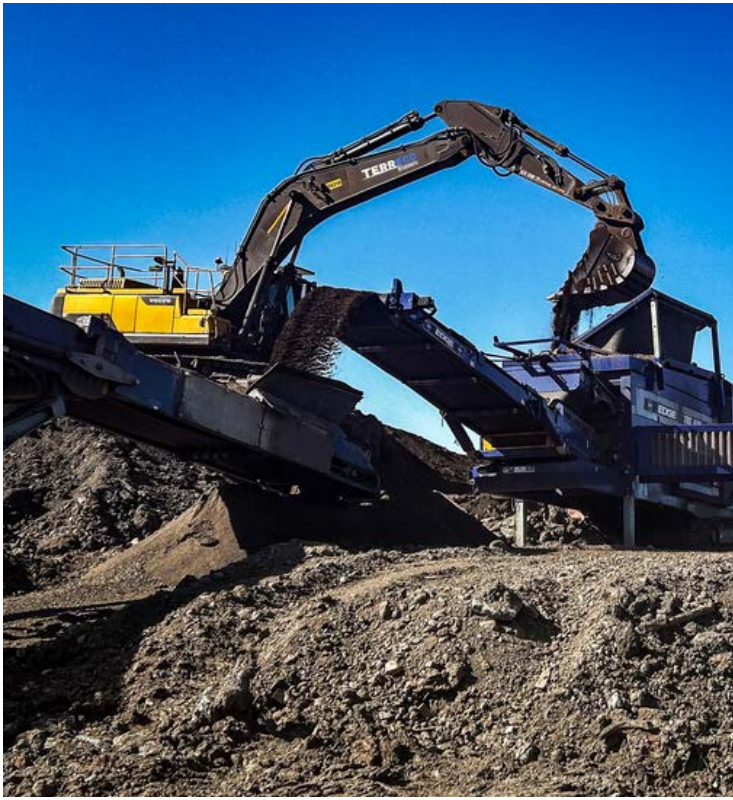
# **TERR**ECO RESOURCES



**REDEFINING  
RESOURCE RECOVERY**

[terrecoresources.com.au](http://terrecoresources.com.au)





## SAFE, COMPLIANT MATERIALS DISPOSAL AND SUPPLY

Whether you're clearing a demolition site or need materials for a construction, civil or landscape project, Terreco Resources provides safe, compliant disposal and supply of materials for businesses that require a sustainable approach to resource management.

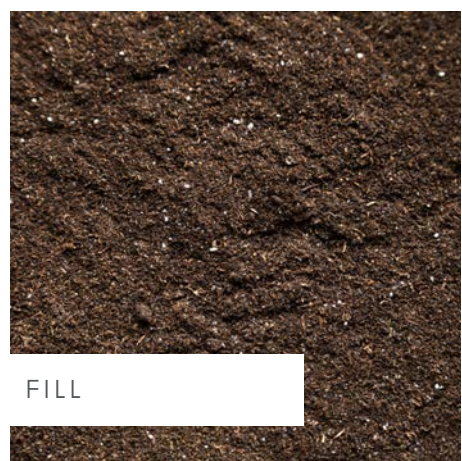
In keeping with relevant legislation, Terreco Resources has the appropriate environmental authorities in place, both at our 20 hectare site located at Bald Hills on Brisbane's northside and at our 16 hectare site in Burleigh Heads on the south end of the Gold Coast. These environmental authorities licence Terreco Resources to accept construction and demolition materials for recycling and reuse, including clean and dirty concrete, fill, various sized rock, mud, and soil, including acid sulphate soils.

With over three decades industry experience, we understand the demands of construction and demolition projects, site clean ups, and build preparations. Knowing the challenges, our team will work with you to achieve your project recycling and resource management targets.

# WASTE DISPOSAL.



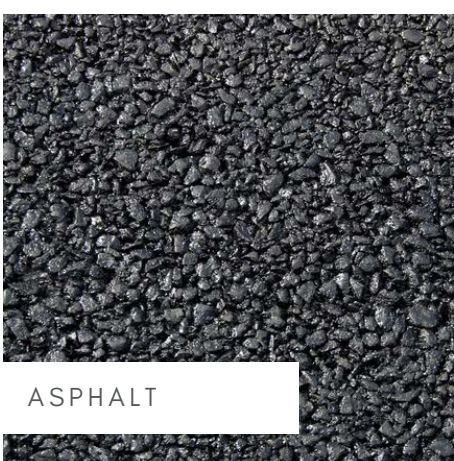
CONCRETE



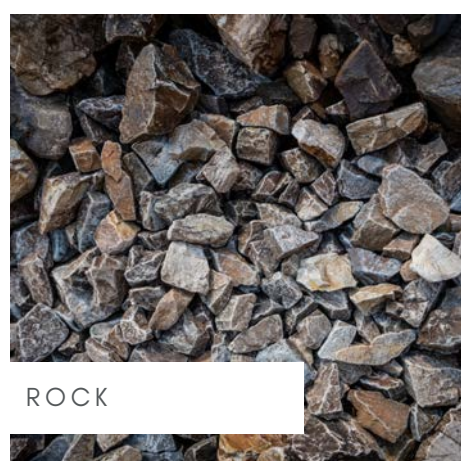
FILL



BRICKS



ASPHALT



ROCK



VACUUM WASTE  
\*BALD HILLS ONLY



# SUPPLY MATERIAL.

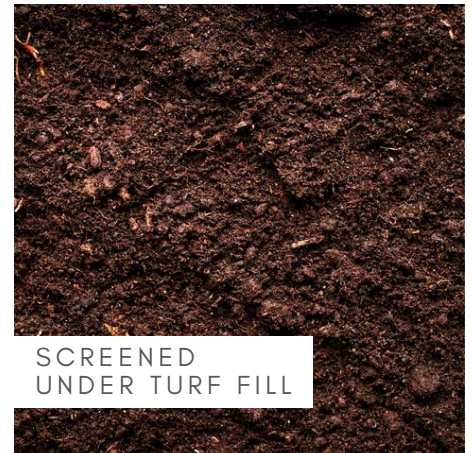
CALL 1300 634 444  
TO CONFIRM AVAILABILITY



COMPACTABLE  
FILL MATERIAL



AGGREGATES



SCREENED  
UNDER TURF FILL



CRUSHER DUST



ROAD BASE

Waste streams not accepted at Terreco Resources include: Asbestos, batteries, flammable materials, food waste, hazmat, mattresses, paint, PFAS, and putrescible waste. All such materials identified in disposal will be returned at the discretion of Terreco Resources and cost of material importer. All materials must be moved in accordance with the National Fire Ant Eradication Program.



## SUSTAINABLY SUPPORTING QUEENSLAND'S CIRCULAR ECONOMY WITH RECYCLED MATERIALS FOR REUSE

In 2022, Terreco Resources - a resource recovery and recycling business - commenced trading under new management at a site formerly known as East Coast Gravel. Our Brisbane site is strategically located in Bald Hills near the Bruce Highway. The Bald Hills site services regions to the north and in Brisbane itself. On the Gold Coast, our Burleigh Heads site services the entire Gold Coast region, with capacity to support businesses and development in northern New South Wales

We bring a sustainability focus to our business, and as such, acknowledging government, industry, and communities increasingly demand that finite resources are more effectively managed, we see that Terreco Resources has an important role within Queensland's circular economy. As a company committed to making a meaningful contribution to improved resource recovery, reprocessing, and reuse, Terreco Resources recycles, repurposes, and provides for appropriate disposal of materials in accordance with regulatory requirements and broader stakeholder expectations





**NEED A QUOTE?**  
**1300 634 444**  
[terrecoresources.com.au](http://terrecoresources.com.au)

Terreco Resources' two locations in Bald Hills on Brisbane's northside and in Burleigh Heads at the south end of the Gold Coast means we have the capacity to import and supply materials across the entire Southeast Queensland corner. Terreco services the construction, demolition, and waste management industries.



**BRISBANE:** Exit to Gravel Plants, Gympie Arterial Road, Bald Hills.  
Site Hours 6:30am - 4:30pm

**GOLD COAST:** 5 Oyster Creek Drive, Burleigh Heads.  
Site Hours 6:30am - 4:00pm



[info@terrecoresources.com.au](mailto:info@terrecoresources.com.au)



1300 634 444



**in f**

